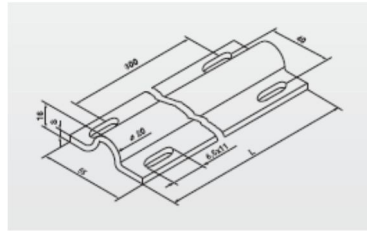
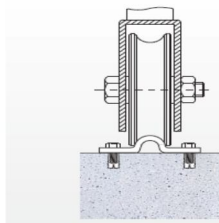
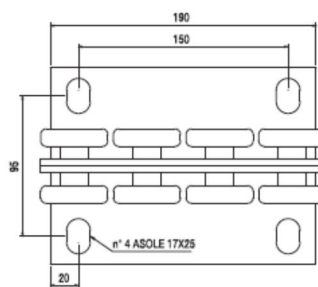
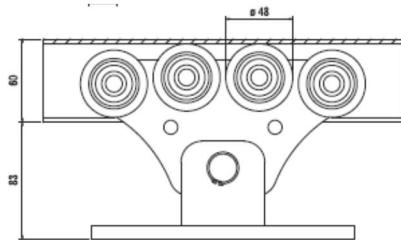
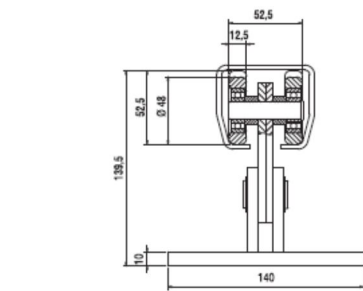


Zestaw Rolling Center do bramy przesuwnej na rolkach i szynie FLOOR

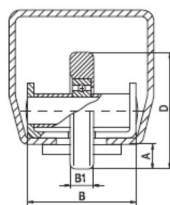
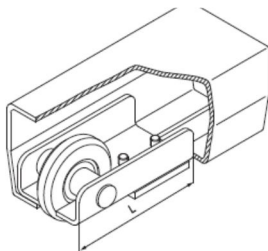


Zestaw mały Rolling Center do bramy na wózkach

Wymiary Szyny GIPI 4 RP: 70x60x3,5



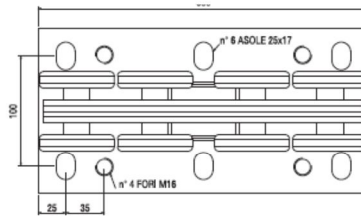
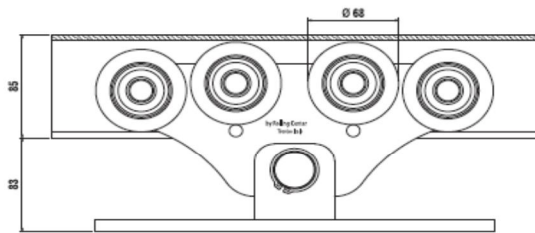
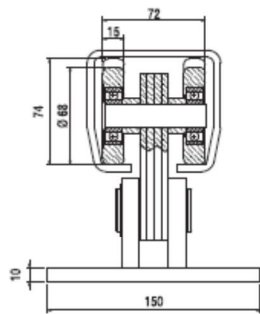
Articolo - Article	L1	Peso cancello Gate weight	Abbinabile Combining			
Riferimento - Reference	Max ML			N°		
CA 4 RPS	LT 00 50 90	3	450	GIPI 4 RP / RPZ	2	9,58



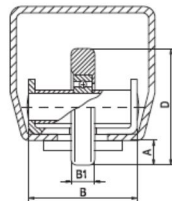
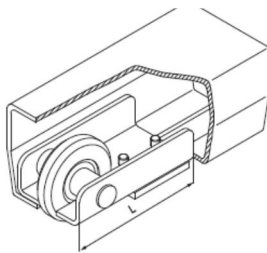
Articolo - Article	B	B1	L	A	D	Abbinabile Combining			
Riferimento - Reference	mm						N°		
41 B	LT 00 50 10	50	15	125	13,5	68	GIPI 4RP/PZ	10	10,2
41 P	LT 00 74 10	68	15	125	15	74	GIPI 4PG/GZ	10	12
41 G	LT 00 98 10	105	30	16	14	98	GIPI 4RMMZ	2	6,5

Zestaw średni Rolling Center do bramy na wózkach

Wymiary Szyny GIPI 4 RG : 94x85x5



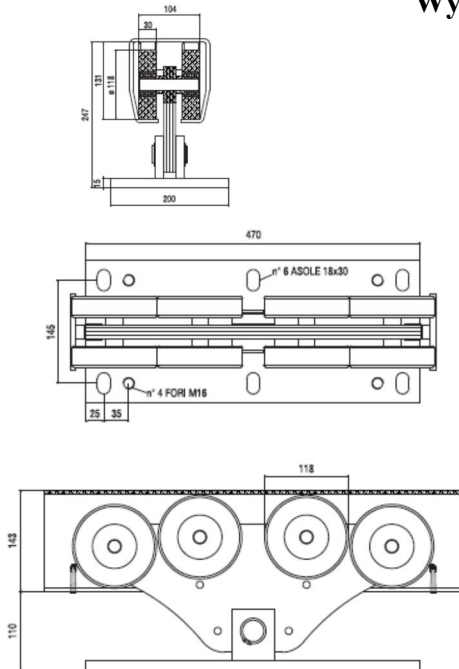
Articolo - Article		L1	Peso cancello Gate weight:	Abbinabile Combining	
Riferimento - Reference		Max ML			N°
CA 4 RS	LT 00 80 80	8	600	GIPI 4 RS / GZ	2 21



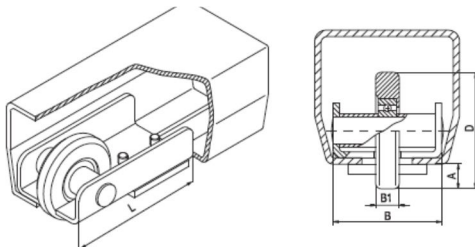
Articolo - Article		B	B1	L	A	D	Abbinabile Combining	
Riferimento - Reference		mm				∅		N°
41 B	LT 00 50 10	50	15	125	13,5	68	GIPI 4RP/PZ	10 10,2
41 P	LT 00 74 10	68	15	125	15	74	GIPI 4RG/GZ	10 12
41 G	LT 00 98 10	105	30	16	14	98	GIPI 4RM/MZ	2 6,5

Zestaw duży Rolling Center do bram na wózkach

Wymiary szyny GIPI 4 RM: 136x143x6



Articolo - Article	L1	Peso cancello Gate weight	Abbinabile Combining	
Riferimento - Reference	Max ML			N°
CA 4 RMS LT 01 20 80	16	1200	GIPI 4 RM/MG	1 44,6



Articolo - Article	B	B1	L	A	D	Abbinabile Combining		
Riferimento - Reference	mm					∅		N°
41 B	50	15	125	13,5	68	GIPI 4RP/PZ	10 10,2	
41 P	68	15	125	15	74	GIPI 4PG/GZ	10 12	
41 G	105	30	16	14	98	GIPI 4RMMZ	2 6,5	